

INTRODUCING TILBURY

**WELCOME TO TILBURY
CEMENT WORKS, OUR
FLAGSHIP MATERIALS
IMPORT AND
MANUFACTURING
FACILITY.**

Contents

- 04 Welcome to Tilbury
- 08 Why Tilbury?
- 12 Tilbury at a glance
- 14 Cutting edge technology
- 18 The build journey
- 24 Inside the build
- 26 Holcim UK solutions
- 30 Quality products as standard
- 32 Built on collaboration

**TILBURY
GOES BEYOND
SUPPORTING
SUSTAINABLE
CONSTRUCTION -
IT'S BUILT ON IT.**



WELCOME TO TILBURY:

Making sustainable construction a reality.

The development of Tilbury Cement Works is a milestone in the evolution of lower carbon construction.



Left: Located just off the river Thames in the Port of Tilbury docks.

Left top and bottom: On site during steel frame construction of the storage hall.

Set in a prime location on the River Thames, this state-of-the-art facility marks a bold step forward in Holcim UK's mission to make sustainable construction a reality.

Designed from the ground up with circularity and decarbonisation in mind, Tilbury will supply the materials that help shape everything from major infrastructure to homes, schools, workplaces, and communities - lower carbon, higher performance, and ready for the demands of a changing market.

This is more than an investment in capacity - it's an investment in impact. At Tilbury, we're transforming how building materials are made, moved and delivered. With a focus on innovation, agility and environmental responsibility, the terminal is set to become a key hub for Holcim UK's sustainable cement product ranges, supplying both traditional and lower carbon materials 24/7.

From concept to construction, sustainability has shaped every decision. We've reused and repurposed materials from the site itself, reduced emissions through smarter construction methods, and used our own portfolio of eco products throughout. The project brings our sustainability ambitions to life.

**Every element of
Tilbury has been
designed with carbon
reduction in mind.**



The storage hall
under construction.

WHY TILBURY, WHY NOW?

Building resilience
and surety of supply.

UK construction market demand for lower carbon and circular cementitious materials is rising fast.

At Holcim, we're committed to meeting that demand with greater certainty and agility, advancing climate conscious material solutions.

That's why we've invested in Tilbury. This new facility significantly expands our UK cement footprint, enhancing our ability to serve customers across the South of England and beyond with an unparalleled, future-ready product range.

Tilbury will provide reliable access to an extensive portfolio of cement and alternative raw materials - all produced by Holcim, either in the UK or through our global manufacturing network. By increasing deep-sea vessel capacity, we're also reducing transport-related emissions too.

Crucially, Tilbury completes our strategy to build a more geographically distributed network; enabling us to reach more customers, with lower lorry miles, and deliver quality materials wherever they're needed.



● MANUFACTURING ● TERMINAL NETWORK

By increasing deep-sea vessel capacity, we're reducing transport-related emissions.



Above: We're continuing to invest in deep sea transport, having recently commissioned the world's largest cement freight vessel.

Right: Cement is an important building material essential for UK construction projects, from our homes to the infrastructure that supports us.



**TILBURY COMBINES STATE-OF-THE ART
PRODUCTION AND LOGISTICS
TECHNOLOGY TO DELIVER A NEW
STANDARD IN CEMENT MANUFACTURING.**

TILBURY AT A GLANCE:

A plant of the future.

DOME SILO

Unique structure, storing up to 30,000 tonnes of material.

SILO ARRAY

To store on-site manufactured materials.

STORAGE HALL

Designed to store up to 50,000 tonnes of material.

STORES & OFFICES

With advanced control room and on-site testing laboratory.

ECO HOPPER

For efficient imports of dry bulk cargo.

LOADING HEADS

Six loading heads, operational 24/7.

VERTICAL ROLLER MILL

To grind a mix of construction demolition waste and alternative raw materials.

CUTTING EDGE TECHNOLOGY:

Combined with circular thinking.

Tilbury is a cutting-edge facility built with the latest manufacturing, materials handling, and monitoring technologies.



Top and bottom left:
Our on site lab will test
our material quality
every day.

Smarter by design

Tilbury is a smart plant from the ground up. From live materials tracking and predictive maintenance to automated data analysis, every process is connected. Our fully integrated sales-to-invoice system ensures a seamless experience for customers.

More materials, faster

Our on-site blending facility will help us to drive real innovation in the market, enabling us to process and deliver a broader range of cementitious materials, including bulk batch and bespoke cement blends. We'll be able to deliver these with high efficiency and reduced emissions.

Innovative operations

The UK's first cement dome silo provides a unique storage solution, maximising capacity while maintaining a climate-controlled environment to ensure consistent product quality.



Left: From our control room we'll oversee the whole manufacturing process.

Better connected

Located at a major deep-sea port, Tilbury seamlessly imports materials from our global network. It also accommodates the world's largest and most advanced cement freight vessel, a new addition to our growing operations.

Streamlined loading systems and smart scheduling tools support our 100% electric vehicles, reducing turnaround times, cutting emissions, and improving service speed for our customers.

**“TILBURY IS BUILT
AROUND ONE CLEAR
PROMISE TO OUR
CUSTOMERS – ABSOLUTE
RELIABILITY IN SUPPLY
AND UNCOMPROMISING
QUALITY IN PRODUCT.
CUSTOMERS SHOULDN’T
HAVE TO THINK TWICE
ABOUT AVAILABILITY OR
PERFORMANCE – TILBURY
WILL TAKE CARE OF THAT.”**

KRISH PATEL,
PLANT MANAGER, TILBURY



THE BUILD JOURNEY:
The making of Tilbury

Tilbury will be fully operational in January 2027, ready to serve customers across the region and beyond.



JANUARY 2022

2022

January
Design concept development



2024

February
Civil works commence



2025

May
ECOPact pour on site, VRM slab & LPG tank wall pours take place



2025

July
Vertical Roller Mill install commences



2026

May
First CEM I delivery



2027

January
Site fully operational, first GGBS deliveries



2023

September
Work starts on site



2024

November
Our unique dome silo is inflated



2025

July
End of civil works, structural works on storage hall underway



2026

April
GBFS conveyor system mechanical installation complete



2026

June
First CEM I bulk dispatch & VRM mechanical install complete



JANUARY 2027



**A BOLD STEP
FORWARD
IN HOLCIM
UK'S MISSION
TO MAKE
SUSTAINABLE
CONSTRUCTION
A REALITY.**

INSIDE THE BUILD:

Greener from substructure to skyline.

Tilbury is more than a new facility - it's a living example of Holcim's commitment to sustainable construction in action.



Far left and left: Part of the site under construction using our ECOPact® ready-mix concrete.

Tilbury doesn't just support sustainable construction, it's built on it.

From the outset, every element of the terminal's development has been shaped by circular principles and carbon-conscious choices. Over 25,000 m³ of concrete from the original site has been recycled and reused, alongside 10,000 tonnes of recycled asphalt plantings incorporated into new surfacing solutions. Plus, nearly 20,000 tonnes of excavated material has been recycled through our waste management business.

During construction, we've used a broad range of lower carbon materials from our own portfolio - including ECOPact ready-mix concrete, precast components, recycled aggregates, and reclaimed asphalt - ensuring our sustainability ambitions are reflected not just in the products we'll deliver, but in the way we've built the site itself.

25,000
cubic metres of recycled concrete

10,000
tonnes of recycled surfacing

20,000
tonnes of waste repurposed

HOLCIM UK SOLUTIONS:

Building with confidence using Holcim materials.

To deliver our facility we used Holcim business solutions wherever we could on the scheme build, from lower carbon paving and recycled asphalt through to eco ready mix and recycled aggregates.



Our ECOPact® readymix was used across the site for civil works.

Our green products are at the heart of Tilbury.



ECOCycle® Aggregates

Our ECOCycle® aggregates contain reused construction demolition materials to drive circular construction. Working with our in-house CDM businesses, we've used materials with up to 100% recycled content on the Tilbury build.



ECOPact® Readymix

Our ECOPact® readymix is made from our own lower carbon cement, offering 30% less embodied carbon than traditional readymix alternatives. Fully BS 8500 compliant, ECOPact® is made with alternative supplementary cementitious materials.



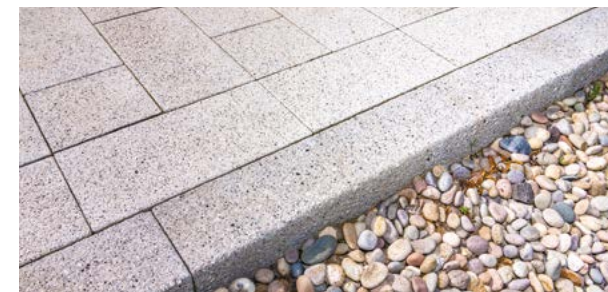
ECOPlanet® Cement

ECOPlanet® cement has been used in many concrete products on site. Made from GGBS, a by product from steel manufacturing, ECOPlanet® delivers 30% less carbon than any other Portland cement currently available in the UK.



RAP Asphalt

Our reclaimed asphalt pavement products - material derived from previously built asphalt surfaces - have been used as a circular solution for all our road surfacing on site. We've also used all excess RAP taken from the site itself in other projects across the region.



Andover Paving

Our Andover flag and block paving - made with up to 20.5% recycled content - is manufactured in the UK using specially selected aggregates and our aqua etching technology to achieve an unrivaled textured surface finish.

Bringing the best of Holcim eco solutions together in this exemplar project.

**“TILBURY CEMENT
WORKS IS A SIGNIFICANT
STRATEGIC INVESTMENT
BY BOTH THE PORT AND
HOLCIM TO SATISFY
INCREASING UK DEMAND
FOR LOW CARBON
AND SUSTAINABLE
CONSTRUCTION
MATERIALS.”**

DAVID WEBSTER, REGIONAL DIRECTOR
FOR THE PORT OF TILBURY

QUALITY PRODUCTS AS STANDARD:

Delivering smarter building solutions.

Once operational, our advanced facility will manufacture and supply a diverse range of traditional and innovative products, including GGBS and other low carbon cementitious materials.



CEM I is perfect for structural concrete projects, such as our HS2 Curzon Street development.

Materials will be available 24/7 to collect or deliver across the South of England.



CEM I Cement

Ordinary Portland Cement (OPC) is a high strength cement suitable for a wide variety of applications. This CEM I 52,5N material is fully compliant with BS EN 197-1, and is manufactured to the highest quality standards to ensure material consistency.



CEM II Cement

Portland Limestone cement is perfect as a lower carbon cement replacement for OPC. This high strength 52,5N CEM II/A-L is quality controlled to conform to BS EN 197-1. Its lighter grey colour makes it perfect for architectural projects, as well as for precast concrete, readymix, screed, mortar, render, grouts and volumetric production.



GGBS

Ideal for low carbon concrete production, we'll be grinding Ground Granulated Blast Furnace Slag (GGBS) on site. GGBS - a by product from steel manufacturing - is a cement addition providing a perfect mix of environmental and performance benefits.



ECOPlanet® Cement

With 30% less carbon than any other Portland cement currently available in the UK, ECOPlanet® sulfate resistant cement offers the perfect combination of eco credentials and great performance, while being fully compliant with British Standards.



ECOCycle® Cement

As part of our commitment to drive circular construction across the UK, we'll be introducing ECOCycle® - an independently verified cement made with recycled construction demolition materials.

BUILT ON COLLABORATION: Delivering Tilbury, together.

Tilbury is more than a landmark development - it's a testament to the power of partnership. From day one, this project has been shaped by close collaboration between Holcim UK businesses and a diverse network of expert partners.

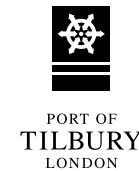


The Tilbury project partners

Designers, builders, and specialist trades - hundreds of dedicated individuals - have brought their expertise to bear, committed to delivering every key project milestone.

We're proud to recognise the collective effort behind Tilbury.

Together, we've brought
to life a shared vision.







**CARBON
BALANCED
PRINT**

www.carbonbalancedprint.com
CBP2225