

# MASTERLITE® ULTRA

## A LIGHTWEIGHT SOLUTION WITH LASTING PERFORMANCE



### LIGHTWEIGHT BLOCKS FOR IMPROVED HANDLING & FASTER INSTALLATION

Masterlite® Ultra's lightweight design reduces strain, speeds up installation, and improves site efficiency.



### SUPPORTING SUSTAINABLE CONSTRUCTION VIA THERMAL EFFICIENCY

The lightweight construction increases thermal efficiency, enabling projects to meet Future Homes Standard U-values and cutting homeowner heating costs.



### CONSTRUCTED WITHOUT COMPROMISE

Durability and load-bearing performance, flexible applications, and ideal plaster/render adhesion, Masterlite® Ultra simplifies modern builds.



### PRODUCT DATA

Size (mm) L x H x W	440 x 215 x 100	440 x 215 x 140
Mean Unit Strength (N/mm <sup>2</sup> )	3.6 & 7.3	
Net Dry Density (kg/m <sup>3</sup> )	1050	
Weight (kg)	10.23	14.32
Pack Size (m <sup>2</sup> )	9.0	6.0



For further information

**PLEASE SCAN THE QR CODE,  
VISIT [HOLCIM.CO.UK](https://www.holcim.co.uk) OR  
CALL US ON 01285 646 900**

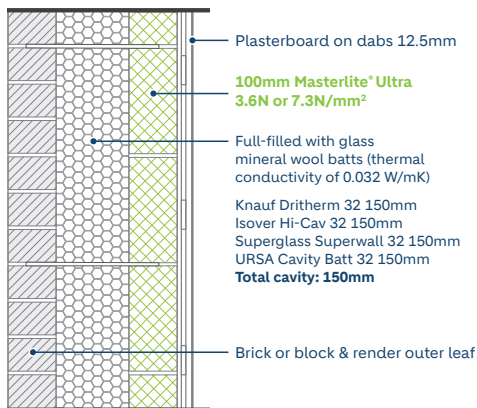


# MASTERLITE® ULTRA



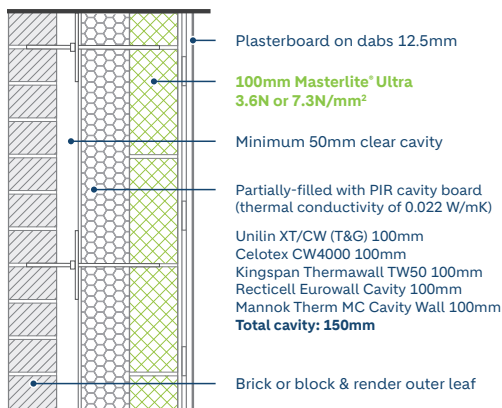
## 150mm

### Fully filled cavity walls



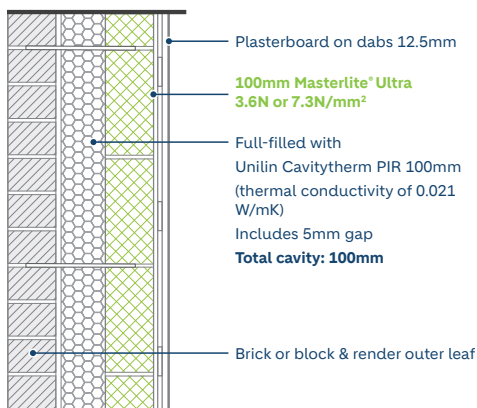
## 150mm

### Partially filled cavity walls



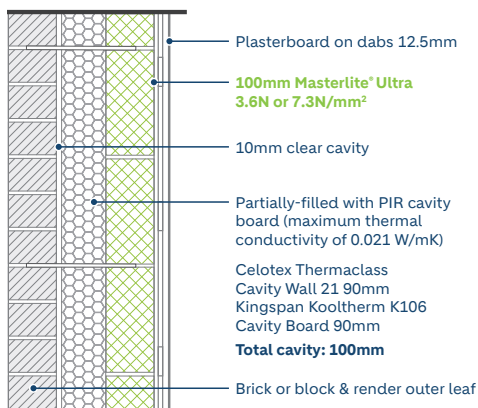
## 100mm

### Fully filled cavity walls



## 100mm

### Partially filled cavity walls



For further information

**PLEASE SCAN THE QR CODE,**  
**VISIT [HOLCIM.CO.UK](http://HOLCIM.CO.UK) OR**  
**CALL US ON 01285 646 900**

