

SUPERFLOW

AGGREGATES

**WATER
MANAGEMENT
THAT FLOWS
WITH SUPERFLOW
AGGREGATES**

HOLCIM SUPERFLOW AGGREGATES

CONTENTS

04 INTRODUCTION TO SUDS

06 SUSTAINABLE SOLUTIONS

08 INFILTRATION AND RUN-OFF

**10 PRODUCT AND
APPLICATION SELECTION**

**12 ENGINEERED OR
HARD LANDSCAPING**

14 SURFACE TYPES

**16 WATER MANAGEMENT
WITH SUPERFLOW**

18 SUPERFLOW PRODUCT RANGE

**24 SUPERFLOW PREMIUM
PRODUCT RANGE**



SuDS WITH HOLCIM

The SuperFlow® product range is Holcim's line of high performance aggregates specifically designed to provide controlled water management within SuDS.

With our SuperFlow and SuperFlow Premium options, our products make any project flow easily from the very start. Plus, with constant technical monitoring and testing, it flows confidently into the future too.

Climate change is the main threat for us as a society as we live with the consequences of global warming. Extreme weather events, like heat waves, storms and droughts, are already more intense and more present in our lives. This presents us with the greatest challenge of our time.

In the UK, ever-changing weather systems, increasing urbanisation and rapid run-off have put a tremendous strain on conventional storm water drainage systems. This has resulted in sewers and culverts becoming overloaded, causing floods and contaminating natural waterways.

Sustainable Drainage Systems (SuDS) provide an alternative approach to traditional drainage systems. They mitigate many of the adverse impacts of storm water run-off on the environment in terms of both volume and pollutants.

**WATER MANAGEMENT
THAT FLOWS. ASK US
ABOUT SUPERFLOW
AGGREGATES**

With a breadth of expertise and solutions, Holcim has always been at the forefront of research work regarding materials for use in SuDS systems.

When it comes to energy innovation, we continually explore solutions to create long-term value for our customers' businesses, reduce our carbon footprint and promote a circular economy.

To maintain essential energy levels for our kiln, our on-site alternative fuels facility powers our journey, operating around the clock to ensure a steady stream of non-fossil fuel energy. By harnessing construction demolition waste and other cutting edge alternatives, we generate over 70% of our heat from these sustainable sources. Our ambitious vision is to fuel our kiln entirely with alternative energy by 2030.

Our SuDS solutions work by temporarily retaining and slowly releasing rainfall back into the waterways in a controlled manner.

This helps prevent floods, while allowing natural processes to break down pollutants which would otherwise impact further downstream. SuDS became a legal consideration for all new developments per the Flood & Water Management Act 2010 and was integrated into Building Regulations in 2015.





THE NEED FOR SUSTAINABLE DRAINAGE SOLUTIONS

Flood potential

As development increases, so do run-off speeds and volumes. Their rapid delivery into the local water courses can cause flooding downstream, resulting in danger to life and damage to property, or erosion and destruction of natural habitats.

Pollution

Traffic, hard surfaces and increased run-off can increase the risk of pollutants, which are literally washed off the streets into the water catchment, contaminating the downstream water supply.

Climate changes

It is generally accepted that the UK's climate is changing and that our weather is becoming more extreme. Paradoxically, in the short term, it is not the overall levels of rainfall that influence the need for sustainable drainage, but the ferocity and frequency of the single rainfall events that may cause flooding.

Water management that flows with SuperFlow Aggregates.

Visit our website for more information

www.holcim.co.uk/products/aggregates/sea-flood-defence/superflow



INFILTRATION AND RUN-OFF



Naturally vegetated, rural ground is permeable and has the capacity to absorb high levels of rainfall through its surface - 'infiltration' - and to release the infiltrated water gradually into natural water courses.

Development of this ground can greatly reduce permeability by the introduction of hard surfaces -asphalt, paving concrete and the compaction caused by plant or vehicular movement. Less water infiltrates the ground and more water runs off the surface, more rapidly.

Traditionally, to avoid local flooding, surface run-off has been drained into underground pipe systems and delivered elsewhere into the water catchment area.



KEY BENEFITS

Storm water management

High permeability and drainage capacity.



Environmental management

Minimises urban impact on natural water cycle.



Reduces costs

As part of a Sustainable Drainage Systems (SuDS).



Available with integral colour

To offer decorative and functional hard landscaping opportunities.



Eliminates the need for retention ponds



Saves space

Offers potential space saving for efficient land development.



Mitigates surface pollutants



No standing water

Lessens the risk of surface water freezing.



PRODUCT AND APPLICATION SELECTION

Whatever the challenge, we offer a wide range of products for all type of projects and applications.

Shared surface, mews courts, cul-de-sacks and home zones

Water Transmission layer:
Grassgrid
Infilta
SuperDrain Asphalt

Water storage:
SuperFlow



Driveways

Water Transmission layer:
Grassgrid
Infilta
SuperDrain Asphalt
Hydromedia

Water storage:
SuperFlow



Residential estate and access roads (max. 20mph)

Water Transmission layer:
Grassgrid
Infilta
SuperDrain Asphalt
Hydromedia

Water storage:
SuperFlow



Residential distribution and collector roads (max. 20mph)

Water Transmission layer:
Infilta
SuperDrain Asphalt
Hydromedia

Water storage:
SuperFlow



Pedestrian areas and footpaths

Water Transmission layer:
Grassgrid
Infilta
SuperDrain Asphalt
Hydromedia
Supersport

Water storage:
SuperFlow



Swales

Water Transmission layer:
Grassgrid

Water storage:
SuperFlow



Sport pitches

Water Transmission layer:
Hydromedia
Supersport
Lytag

Water storage:
SuperFlow



Lorry parks

Water Transmission layer:
Infilta

Water storage:
SuperFlow



Industrial estate roads

Water Transmission layer:
Infilta
SuperDrain Asphalt

Water storage:
SuperFlow



Car parks

Water Transmission layer:
Grassgrid
Infilta
SuperDrain Asphalt
Hydromedia

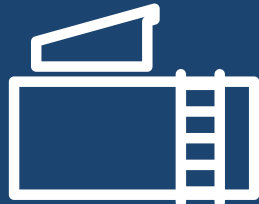
Water storage:
SuperFlow



Roofs

Water Transmission layer:
Infilta
Hydromedia

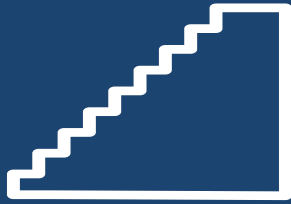
Water storage:
Lytag



Basement

Water Transmission layer:
Infilta
Hydromedia

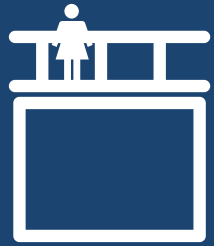
Water storage:
SuperFlow



Podium decks

Water Transmission layer:
Infilta
Hydromedia

Water storage:
Lytag



ENGINEERED OR HARD LANDSCAPING

THE KEY SUDS PRINCIPLES



SOURCE CONTROL

Sustainable drainage systems control surface water run-off as close to its origin as possible. This is termed 'source control'. This minimises changes in the volume and rate of surface run-off from developed sites and thereby minimises flood risk and other environmental damage.

Additionally, SuDS may offer an element of pollution control as well as 'attenuation' – where infiltrated water is stored before its controlled release.



AMENITY AND BIODIVERSITY

Trees are an important element in the biodiversity of urban areas and improve amenity by providing enhanced aesthetics, cooling and shading.

Holcim's SuDS methods can be designed to protect and enhance the health of existing and new trees by protecting the roots systems and providing irrigation and aeration to the soil.



MANAGEMENT TRAIN

These levels of control and treatment result from a series of techniques ('management train') that integrate with one another to gradually reduce levels of pollution, volume and flow rate prior to discharge.



WATER QUALITY

Removing pollution from run-off is an important part of SuDS design.

The use of SuDS to control pollution and replace oil separators is highlighted in the most recent edition of Pollution Prevention Guideline PPG 3 published by the Environment Agency (2006).

ENGINEERED SUDS CAN BE SPLIT INTO TWO DIFFERENT TYPES:

- Permeable surfaces
- Impermeable surfaces with engineered source control drainage systems

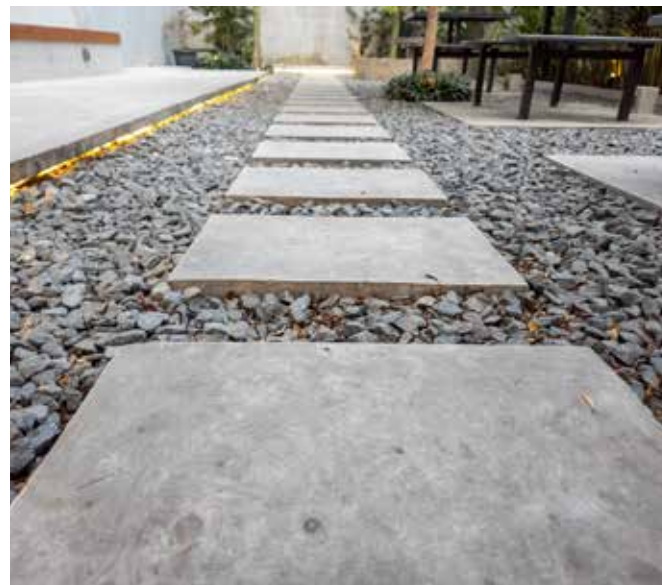


SURFACES TYPES

Pervious surfaces

Pervious surface systems include permeable or porous surfaces to car parks, roads, hardstandings and pedestrian areas. Any area covered by a hard surface can be turned into a permeable surface and incorporated into a sustainable drainage design.

Infiltra block and SuperDrainasphalt are products typical of these types of systems and when incorporated into an urban SuDS development, they enhance the urban landscape. A study by HR Wallingford determined that pervious surfaces are one of the most effective and space efficient methods of incorporating SuDS into developments designed to comply with Planning Policy Guidance 3, requiring a high density of housing to be provided on new developments.



Impermeable surfaces

Impermeable surfaces can accommodate SuDS solutions using a proprietary system available in the market.



SuDS on brownfield sites

The first consideration for using SuDS on brownfield sites is whether ground contamination is actually present, since not all brownfield sites are contaminated.



Green and soft landscaping

Swales, ponds, wetlands and similar methods are classed as green/soft landscaping and many SuDS schemes involve their use. The Charcon systems provided by Holcim UK can be used as part of soft landscaping systems. It is bad SuDS practice to direct untreated run-off into ponds or wetlands as it will reduce their contribution to biodiversity and landscape value.

Holcim UK's systems can be used to provide pre-treatment to stormwater before it enters ponds or wetlands. The geocellular system can be used as an under-drain below swales to improve treatment performance and also increase storage capacity. Grassgrid can be used to provide erosion protection in swales, ponds, and other similar systems.

Even if there is contamination, the use of SuDS is still possible providing that care is taken in its design to avoid mobilising pollution into the surface or groundwater. The use of shallow SuDS such as the Holcim UK's systems should limit the need for the deep excavations that are commonly required with conventional drainage.



ALL CONTAMINATED SITES ARE DIFFERENT AND THE LEVEL OF CONTAMINATION CAN VARY FROM SLIGHT TO HIGH.

Therefore, each site should be assessed on its own merits considering the following:

- ▶ Prevent mobilisation of contamination and its transportation to receiving waters. This means infiltration cannot be used if soils contain contaminants in a form that can be leached out. If such soils are present, then infiltration may still be used if it occurs below the base of the contaminated soils.
- ▶ Prevent the flow of contaminated groundwater into the SuDS solution. Such flow is unlikely with the shallow Holcim UK systems.
- ▶ Use features that minimise excavation and disposal to keep costs down. The excavation and disposal of contaminated soils is expensive, especially in the South East of England. Shallow SuDS features such as permeable pavements minimise excavations giving considerable cost savings.
- ▶ Many brownfield sites are only marginally contaminated and the contamination may be in a non-leachable form. Often, this does not pose a significant risk to groundwater when SuDS are used.

BETTER WATER MANAGEMENT FLOWS

Flood potential

The SuperFlow product range is Holcim UK's line of high performance aggregates specifically designed to provide controlled water management within SuDS. With their SuperFlow and SuperFlow Premium options, our products make any project flow easily from the very start. Plus, with constant technical monitoring and testing, it flows confidently into the future too.

The SuperFlow SuDS range is considered to be environmentally beneficial, causing minimal or no long-term damage. They are used within a succession of management practices, control structures and strategies designed to efficiently and sustainably drain surface water, while minimising pollution and managing the impact on the water quality of local water bodies.

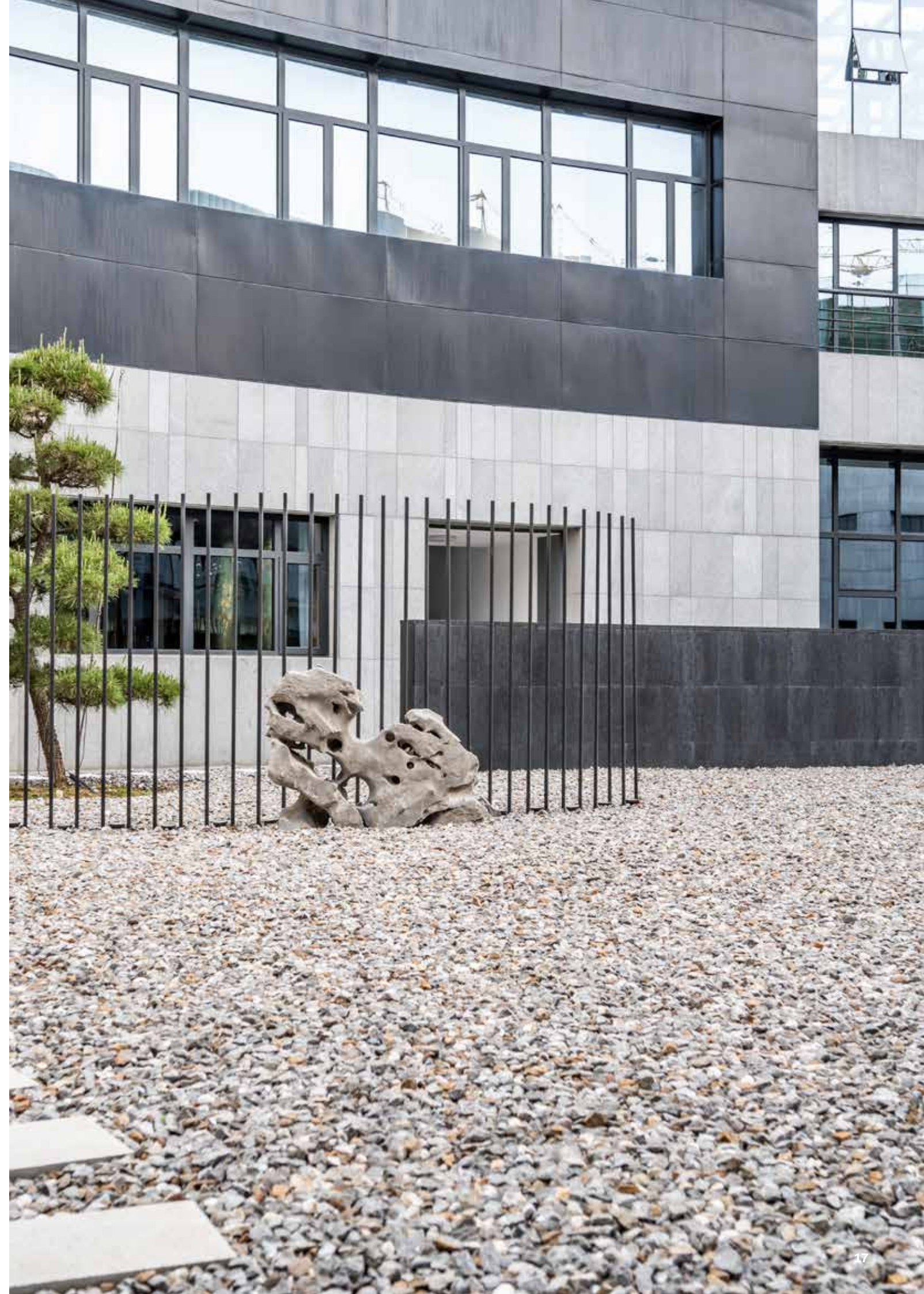
**WATER MANAGEMENT
THAT FLOWS. ASK US
ABOUT SUPERFLOW
AGGREGATES**

**The SuperFlow product range
is a line of high performance
aggregates specifically designed
to provide controlled water
management within Sustainable
urban Drainage systems (SuDS).**

Conforms to both British European standards BS EN13242 and BS EN12620 where applicable.

The materials are well graded, crushed angular particles allowing for optimal compaction and void retention for controlled water flow.

The aggregate strength within the SuperFlow range ensures the long term integrity of the SuDS system is maintained.





SUPERFLOW PRODUCT RANGE

SUPERFLOW PRODUCT RANGE 0/40MM OPEN GRADE FILL AGGREGATE

Aggregate Type:

SuperFlow Premium Alternative:

Application:

Drainage Solution:

0/40mm Crushed Rock

SuperFlow SuDSagg

Subbase reservoir layer

Porous Sub base

This product is an open graded material that meets the requirements of the 13242/13285 specification and the grading specification set out in BS EN 13285. The product has fewer fines compared to other sub-base solutions and is designed to allow water to drain freely.

When compared to our SuperFlow alternative, SuperFlow SuDSagg has no requirement for voids or permeability.



SUPERFLOW PRODUCT RANGE

2/6 AGGREGATE

Aggregate Type:	2/6.3mm crushed angular rock
SuperFlow Premium Alternative:	SuperFlow 6
Application:	Laying course aggregate
Drainage Solution:	Used as a laying course for block paving

2/6 aggregate is what is classed as 6mm single size aggregate this material is designed to BS EN standards and the grading requirements and physical properties that are required of it. This is not s old with any SuDS requirements.



SUPERFLOW PRODUCT RANGE

4/20 AGGREGATE

Aggregate Type:	4/20mm crushed angular rock
SuperFlow Premium Alternative:	SuperFlow 20
Application:	Bedding layer for Block paving
Drainage Solution:	Sub base for use under Block Paving

4/20 is crushed aggregate ranging in size from 4-20mm and complies to both BS EN 13242 and 12620, this means it can be used in applications that call for the use of material compiling to BS 7533 for Block paving uses.

This product is used as a bedding layer for block paving applications. 4/20 has no additional requirements besides the requirements with BS EN standards so there is no guarantee of voids or the permeability of the aggregate when compared to the SuperFlow alternative.



SUPERFLOW PRODUCT RANGE

10/63 AGGREGATE

Aggregate Type:	10/63mm crushed angular rock
SuperFlow Premium Alternative:	SuperFlow 63
Application:	Lower subbase layer
Drainage Solution:	Lower sub base layer for use under Block Paving

10/63mm has historically been sold as part of the sustainable urban drainage system sub-bases and was originally designed as an alternative to Forterra 10-63. The specification for this material was set to follow Forterra’s own grading specifications. This is sold only to meet the required grading specification and has no additional requirements that SuperFlow 63 would meet.



SUPERFLOW PRODUCT RANGE

1/4 AGGREGATE

Aggregate Type:	1/4mm crushed aggregate
SuperFlow Premium Alternative:	SuperFlow Joint agg
Application:	Brushing in grit
Drainage Solution:	Jointing aggregate for Block paving

1/4mm crushed aggregate is designed to meet BS EN standards and ranges in size from 1-4mm and is perfect for a range of general construction uses, including Jointing aggregate.



SUPERFLOW PREMIUM PRODUCT RANGE

**CHOOSE SUPERFLOW
PREMIUM PRODUCTS FOR
OPTIMAL PERMEABILITY**



High grade rock



30% Permeability



Faster drainage

SUPERFLOW PREMIUM PRODUCT RANGE

SUPERFLOW SUDSAGG

Aggregate Type:

0 / 40mm crushed rock

Application:

Subbase reservoir layer

Drainage Solution:

SuperDrainasphalt and Hydromedia

SuperFlow SuDSAgg is a well graded, reduced fines, crushed aggregate with a maximum nominal size of 40mm. SuperFlow SuDSAgg is designed to meet the structural requirements of a Foundation Class 2 material as defined in the Design Manual for Roads & Bridges, with a void content of 30% or greater to ensure optimal water management. Its structural stability means it can be used independently or as a stabilisation layer over Holcim UK's SuperFlow 20 when used under paver laid SuperDrainasphalt.

Working in partnership with our in-house surfacing division, Holcim UK can offer the complete asphalt SuDS solutions.



SUPERFLOW PREMIUM
PRODUCT RANGE

SUPERFLOW 20

Aggregate Type:	4/20mm crushed angular rock
Application:	Upper sub-base reservoir layer
Drainage Solution:	Hand laid SuperDrainasphalt, Infilta Block Paving and Hydromedia

SuperFlow 20 is a coarse graded aggregate produced to British European standard and works as a reservoir sub-base layer, offering controlled rain water retention within the SuDS pavement construction.

SuperFlow 20’s specific grading and low degradation value results in a durable material which is easy to place and compact, while ensuring water flow is slowed and released in a more sustainable and environmentally friendly manner. The excellent physical properties and drainage characteristics of SuperFlow 20 make it an integral component to many Sustainable Drainage Systems. Working in partnership with our in-house surfacing division, Holcim UK can offer the complete asphalt SuDS solutions.



SUPERFLOW PREMIUM
PRODUCT RANGE

SUPERFLOW 63

Aggregate Type:	Coarse crushed angular rock
Application:	Lower sub-base reservoir / capping layer
Drainage Solution:	Infilta Block Paving

SuperFlow 63 is a robust starter aggregate which works as the initial lower reservoir or capping layer within the SuDS pavement construction.

The product offers optimal voids due to its angular shape allowing for controlled water storage and flow, while it’s natural strength ensures the long term integrity of the SuDS solution is maintained.



SUPERFLOW PREMIUM
PRODUCT RANGE

SUPERFLOW 6

Aggregate Type: 2/6 Crushed angular stone
Application: Laying course / bedding aggregate
Drainage Solution: Infilta Block Paving

SuperFlow 6 is a high performance laying course aggregate specifically designed to provide controlled water management within Sustainable Drainage Systems (SuDS). SuperFlow 6 provides a stable flat laying surface, while retaining the optimal level of voids for consistent water flow.

This carefully graded aggregate, with it's natural strength and interlocking properties ensures both the long term integrity of the pavement and the excellent drainage characteristics are maintained.



SUPERFLOW PREMIUM
PRODUCT RANGE

SUPERFLOW
JOINTAGG

Aggregate Type: Crushed stone grit
Application: Brushing in grit / Jointing sand
Drainage Solution: Infilta Block Paving

SuperFlow JointAgg is a high performance finishing aggregate specifically designed for brushing into block pavement joints.

This aesthetically pleasing product offers excellent free draining characteristics due to its low fines content, while it's natural strength ensures the long term integrity of the SuDS is maintained for a refined, yet functional pavement finish.





WATER MANAGEMENT THAT FLOWS. ASK US ABOUT SUPERFLOW AGGREGATES

GET IN TOUCH.

Northern Region Office

01524 738888

Midlands Region Office

01455 288222

South/South East Regional Office

0208 896 6820 opt 1

South West Regional Office

01752 485200 opt 1

Scotland Region Office

01698 870947

West Country Region Office

01373 452002

